

# POE48

## UTPLinks Card Installation Guide

---

The POE48 card is designed to be used with standard PoE type devices such as cameras, telephone, and access points.

### Installation

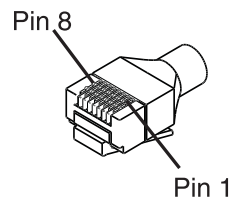
---

- Insert the card into the CX452 unit.
- Connect cable runing to the PoE device (horizontal run) to upper jacks.
- Connect the lower jacks to the network switch.
- At the remote end of the cable run connect your PoE device

### Standard 568B Wiring

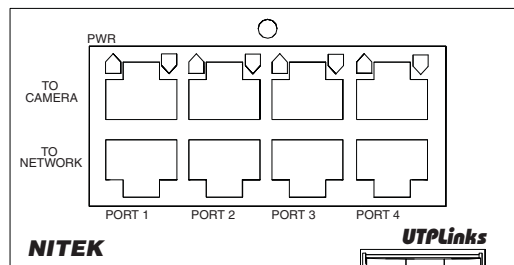
---

PIN	Color Code
1	WHT/ORG
2	ORG
3	WHT/GRN
4	BLU
5	WHT/BLU
6	GRN
7	WHT/BRN
8	BRN



### Front Panel

---



# NITEK®

Rev. 110907

680480101

USA Office:  
5410 Newport Drive • Rolling Meadows, IL 60008  
Phone: (800) 528-4343  
Fax: (847) 259-1300  
E-mail: info@nitek.net • Web: www.nitek.net

Europe Office:  
De Schans 19-21 2a • 8231 KA Lelysted  
Netherlands  
Phone: +31(0)320 -230005  
Fax: +31(0)320 -230005  
E-mail: info@nitek.nl • Web: www.nitek.nl