

# **FAN64**

## **UTPLinks Card Installation Guide**

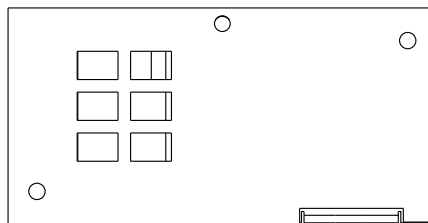
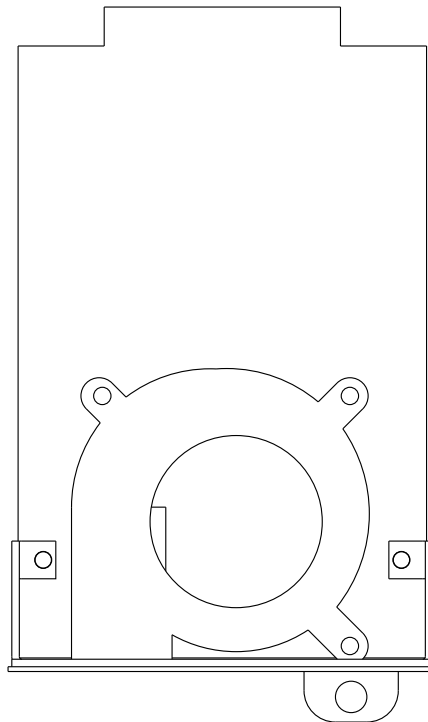
---

The FAN64 card is designed to be used with standard PoE type devices such as cameras, telephone, and access points.

### **Installation**

---

- Insert the card into the CENTER slot of the CX452 unit.
- Use screw to secure card.



# **NITEK**<sup>®</sup>

68 024 0107  
Rev. 020808

USA Office:  
5410 Newport Drive • Rolling Meadows, IL 60008  
Phone: (800) 528-4343  
Fax: (847) 259-1300  
E-mail: [info@nitek.net](mailto:info@nitek.net) • Web: [www.nitek.net](http://www.nitek.net)

Europe Office:  
De Schans 19-21 2a • 8231 KA Lelysted  
Netherlands  
Phone: +31(0)320 -230005  
Fax: +31(0)320 -232486  
E-mail: [info@nitek.nl](mailto:info@nitek.nl) • Web: [www.nitek.nl](http://www.nitek.nl)