

WB5326
Wireless Bridge
Quick Start Guide

Quick Start Guide

WB5326 Outdoor Wireless Bridge

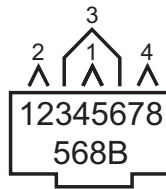
Items Included in Kit

- (1) WB5326 RADIO
- (1) PoE (48V, 1A)
- (1) Mounting Hardware Accessories
- (1) Quick Start Guide
- (1) Product CD

Hardware Installation

- Put an Ethernet cable with RJ-45 connector through the water-tight joint. Make the RJ-45 connector as a 568B wiring configuration:

Terminal	Wire
1	Orange/White
2	Orange
3	Green/White
4	Blue
5	Blue/White
6	Green
7	Brown/White
8	Brown



- Using the hardware provided mount the Bridge unit in position. Make sure that the Ethernet connection is facing down. Keep in mind that the unit has a built-in antenna and must have line of sight between units. Refer to separate mounting guide sheet for illustrations of hardware assembly.
- Plug water-tight joint side of the Ethernet cable into the Bridge unit. Connect the other end of the cable to the power injector supplied with the unit. Also connect a standard RJ-45 network cable for the power injector to a hub or a terminal.
- There is a ground connection on the Bridge unit located near the antenna port. The ground connection should be connected to a proper earth ground point.
- The antenna of the Bridge unit is behind the plastic face of the unit and must face the other Bridge unit. Make sure you have line of site to the opposite unit and that they face each other.

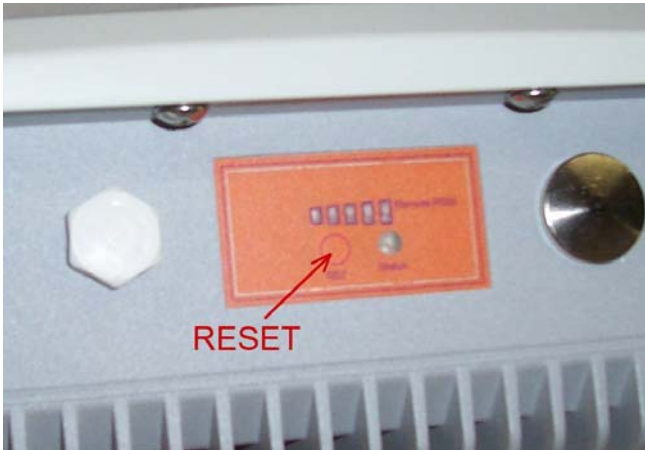


Warning Do not mount Bridge unit near electric power lines, electric lights or near strong electric power signals

- Power the unit using the supplied PoE inserter.

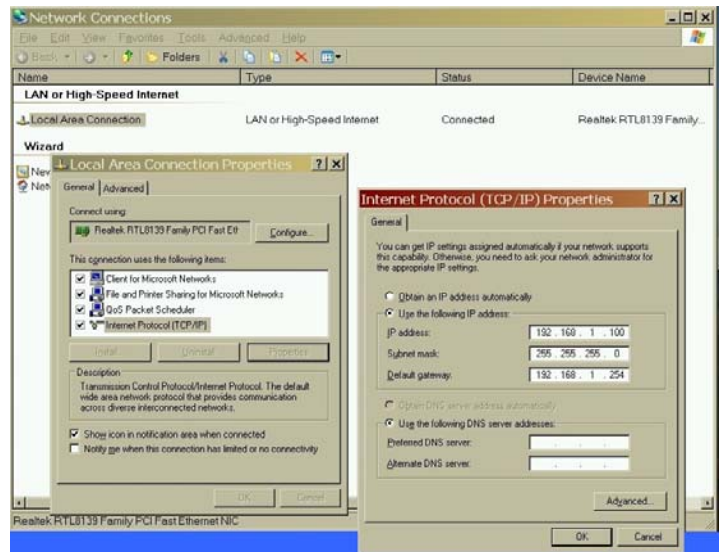
These instructions are designed for configuring this system to be a network Bridge.

1. Power up each Bridge unit for 30 seconds, then RESET it by pressing the Reset button for 10 seconds.



2. On the PC you will be using to setup the Bridge units, select **"Network Connections"** in the control Panel. You can get to it by **Start>Settings>Control Panel>Network Connections**. Locate the **"Local Area Connection"** and right click to select **"Properties"**. When in that tab select **"Internet Protocol (TCP/IP)"**.

3. Set up a computer with a network IP address of:
 IP address **192.168.1.100**
 Subnet **255.255.255.0**
 Gateway **192.168.1.254**



4. Select and note an IP address for each Bridge unit along with an ID name and password for each unit (see Example 1). You will also need to select a Channel from 1-11 for all units. Bridge units are designed to work as a pair. Both units of the pair must operate on the same channel. Different sets should use different channels. For maximum data speed separate sets by 4 channels or more (i.e., 1, 6, 11).

Example 1

Unit	Your IP Address For each unit	Password	Unit ID	Channel*
1	xxx.xxx.xxx.1	Build 1	Building One	1
2	xxx.xxx.xxx.2	Build 2	Building Two	1
3				
4				
5				
6				

* Each pair of units must operate on the same channel (1 - 11). Different pairs should use different channels.

5. Working with one unit at a time, connect it to your computer that was setup in Step 2 and in your browser type “192.168.1.1”.
If you see a warning screen click **Continue**.



6. Enter Name — **admin**
Enter Password — **password**



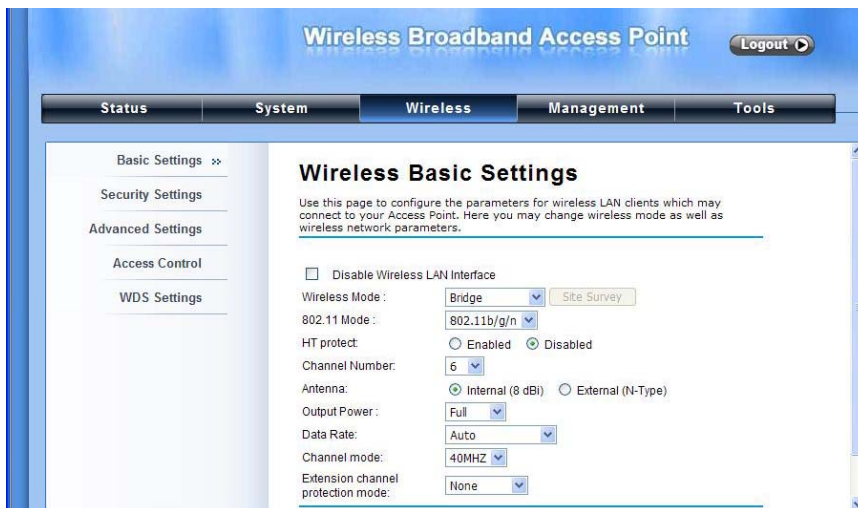
7. At this time select **Management** and **Password Settings** to change the password you are assigning to this unit. Click **Apply**. Be sure to record the password you have set. If you forget it you can reset the unit to return to the default password.



8. Log on with your new password. Select **System** and **Time Settings** to set the current time, date and time zone. If you have a time server you can enter it here. The time setting will not affect the operation of the unit but is used in the System Log file. Click **Apply**.



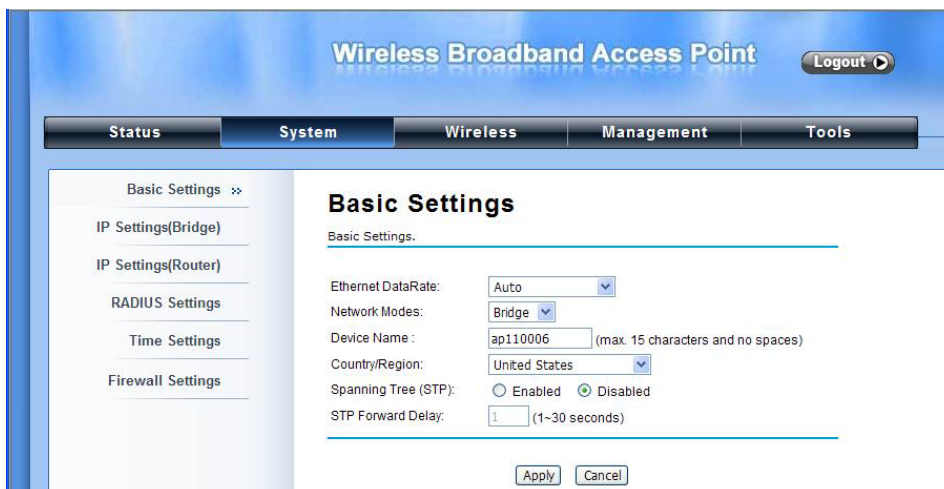
9. Select the **Wireless** and **Basic Settings**. Under **Wireless Mode** select **Bridge** from the drop down menu. Verify the **Channel Number** is your selected channel. Set **Channel mode** for 40MHz. Click **Apply**.



10. Select the **Wireless** and **WDS Settings**. To work as a bridge you must input the MAC address for the mating unit. Note the local MAC address as you will need it when setting up the mating unit. If this is the first unit being set up you may need to come back and fill this in later. You must also set WDS Separation to "ENABLED". Click **Apply**.



11. Select the System and Basic Settings. Under **Country/Region** select the country you are operating in. Under Spanning Tree select Enabled. Click **Apply**.



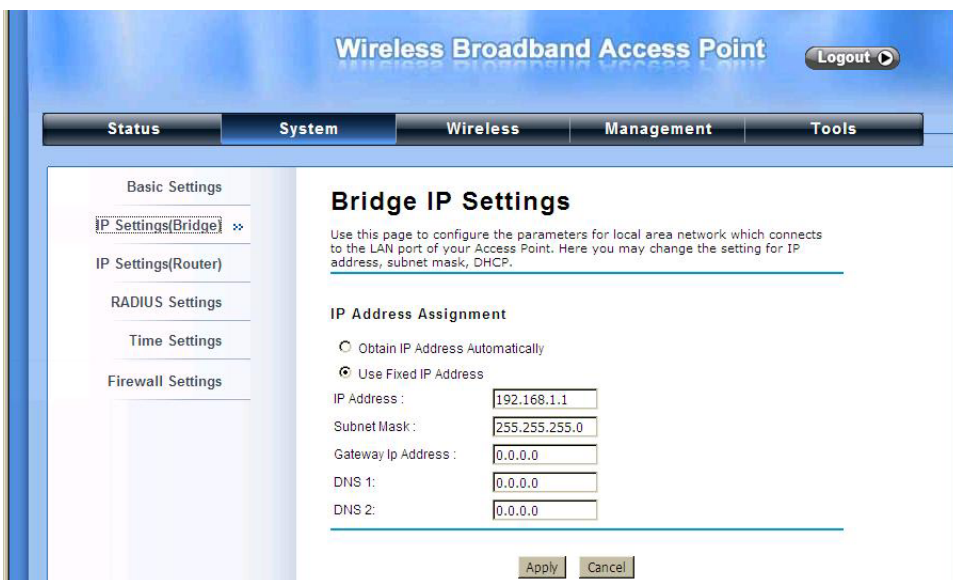
The screenshot shows the configuration interface for a Wireless Broadband Access Point. The main title is "Wireless Broadband Access Point" with a "Logout" button. The navigation menu includes "Status", "System", "Wireless", "Management", and "Tools". The left sidebar lists "Basic Settings" (selected), "IP Settings(Bridge)", "IP Settings(Router)", "RADIUS Settings", "Time Settings", and "Firewall Settings". The main content area is titled "Basic Settings" and contains the following fields:

- Ethernet DataRate: Auto
- Network Modes: Bridge
- Device Name: ap110006 (max. 15 characters and no spaces)
- Country/Region: United States
- Spanning Tree (STP): Enabled Disabled
- STP Forward Delay: 1 (1-30 seconds)

Buttons for "Apply" and "Cancel" are located at the bottom of the form.

12. Finally, select System and IP Settings(Bridge) to change the device IP Address. Enter the Device Name (ID) for this unit.

Enter a unique IP number for each of the devices in a network. It is recommended to always use a Static IP. Click **Apply**. The units are now ready to be installed and connected to your network.



The screenshot shows the configuration interface for a Wireless Broadband Access Point, specifically the "Bridge IP Settings" page. The main title is "Wireless Broadband Access Point" with a "Logout" button. The navigation menu includes "Status", "System", "Wireless", "Management", and "Tools". The left sidebar lists "Basic Settings", "IP Settings(Bridge)" (selected), "IP Settings(Router)", "RADIUS Settings", "Time Settings", and "Firewall Settings". The main content area is titled "Bridge IP Settings" and contains the following information:

Use this page to configure the parameters for local area network which connects to the LAN port of your Access Point. Here you may change the setting for IP address, subnet mask, DHCP.

IP Address Assignment

- Obtain IP Address Automatically
- Use Fixed IP Address

Fields for IP configuration:

- IP Address: 192.168.1.1
- Subnet Mask: 255.255.255.0
- Gateway Ip Address: 0.0.0.0
- DNS 1: 0.0.0.0
- DNS 2: 0.0.0.0

Buttons for "Apply" and "Cancel" are located at the bottom of the form.